

# MOPET België B.V., a part of Morssinkhof Rymoplast Group

📍 Allée du Centre Ardenne, 6840 Neufchâteau



## PET trays & PET bottles

- The recycling of PET trays into granulate, chiefly with a view to the production of new trays (tray-to-tray)
- The recycling of transparent and opaque PET bottles, of which an important part is bottle-to-bottle recycling
- 95 % of the tonnages delivered by Fost Plus are again intended for the Belgian market

## Capacity

**40.000 T**

of which 28.000 T  
via Fost Plus



Number of hires



**50** FTE

in the first phase

Investment



**€ 30**  
**million**

Start of  
construction

**IN THE COURSE OF**  
**2022**

Operational  
as of

**DECEMBER**  
**2023**

## About Morssinkhof Rymoplast Group

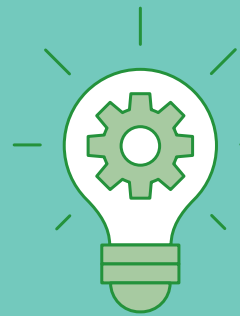
The Morssinkhof Rymoplast Group family business was founded in 1961 and has since then been playing a leading role in the European plastic recycling industry. The Group has 10 processing plants in Europe, each with its own specialism. It produces 350,000 tonnes secondary raw materials annually out of post-consumer and post-industrial plastics.

The core business focuses on the recycling process of five different plastic types: HDPE, LDPE, PET, PS and PP. Morssinkhof has more than 20 years' experience in the production of food grade PET granulate for the production of new bottles for the food industry. The Group consists of two business units: Rymoplast and Morssinkhof Plastics.

The Neufchâteau site is part of the business park Ardenne Logistics of IDELUX in the province of Luxembourg.

## Innovation

- Among the European precursors for efficient recycling of monolayer PET trays on a large scale
- Important engagement to applications for pellets from multilayer PET trays
- First Belgian recycler that processes opaque PET bottles (15<sup>th</sup> PMD faction as of 01/01/2023) with a view to bottle-to-bottle recycling
- Lot on option for the expansion of the activities to CuRe Technology: an advanced "enhanced" recycling process that removes colouring and additives from PET, so that it can be reused as secondary raw materials



## Recycling process for PET

- Post-sorting at item level to optimise the quality of secondary raw materials
- Milling, cold and hot washing on separate processing lines
- Regranulation and post-condensation of all the hot washed PET flakes into granulate